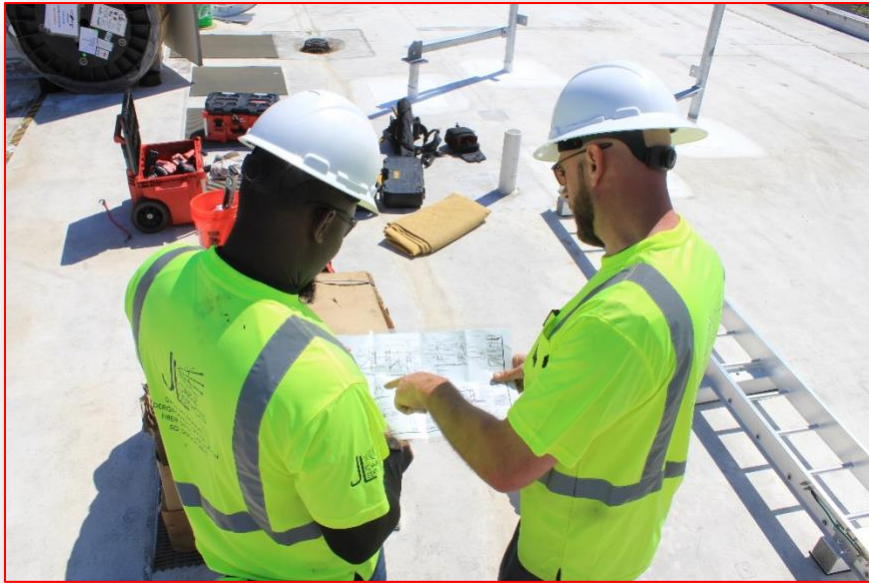


FLEXIBLE SOLUTIONS FOR YOUR WIRED
AND WIRELESS TELECOM NEEDS
**INSTALLATION, MAINTENANCE, CONSULTATION, AND
QUALITY ASSURANCE SERVICES**



JandLComm.com

North Chelmsford, MA – Manchester, NH
(978) 454-0428

Massachusetts • Pennsylvania • Maine • New Hampshire • Vermont • Connecticut • Florida

A Member of



CAPABILITY STATEMENT

About the Company

Established in 1987 as J&L Cable TV Services Inc. by Joe and Linda DaSilva, JL Communications is a national installation, service and telecom construction contractor. Our installation and service expertise include over 30 years in traditional copper/coaxial wiring and now extends into the rapid paced advancements in fiber optic and wireless technologies.

Over the last 33 years we have grown from a small contract cable TV installation firm into one of the largest wired and wireless installation firms in our industry. Today we partner with both large and small customers, providing professional installations in residential and commercial environments, aerial and underground construction services, fiber installations and numerous other cabling and wiring projects.



Corporate Profile

J&L Communications is a member of JL Group
190 Middlesex Street
North Chelmsford, MA 01863
www.jlgroup.com





In this statement, we would like to showcase our capabilities and share the experience and knowledge acquired by our team of over 100 highly skilled technicians, professionals and managers in each of their respective disciplines. Throughout this evolutionary process, our core principle has remained the same:



“Consistently deliver innovative solutions reinforced by responsive client service and a commitment to quality and excellence.”

Since 1987, our experts have gained an incredible amount of experience completing commercial and residential cabling installations in Massachusetts, Pennsylvania, Maine, New Hampshire, Vermont, Connecticut and Florida.



The followings are the practice areas of our experts;

- Digital TV, Internet and Phone Installations
 - Aerial and Underground Construction
 - MDU Prewire and Rewire Projects
 - Data Network Wiring (Structured Cabling)
- Aerial and Underground Fiber Optic Splicing
 - Related Hardware Installations
- Wireless Antenna and Related Technology Installation



Service and Repair Capabilities

Post-install service and repair capabilities include:

- Commercial and Residential service changes and upgrades
 - Aerial and underground damage isolation and repair
- Testing and repair of service lines inside and outside of premises
 - Identifying and replacing defective equipment
 - Emergency service restoration and support
 - Fiber Optic Testing and Repair
 - Customer Education



Installation Capabilities

Installations and Service Delivery Capabilities:

- Residential and Commercial Digital TV, Internet and Phone (Fulfillment)
- Underground Utilities
- Commercial and MDU Rewires & Prewires
- Data and Network Cabling
- Fiber Optic – Outside Plant and Commercial and Residential Fiber to the Premise
- Wireless Technologies – roof-top and pole mounted antenna systems



Benefits

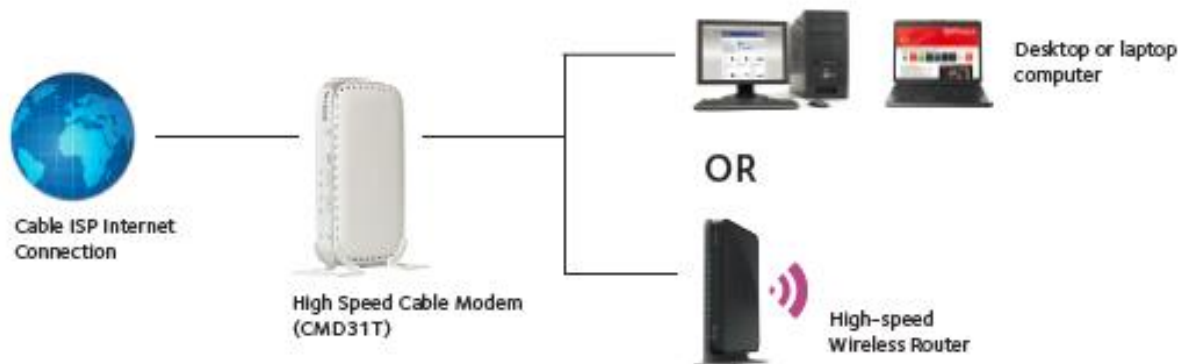
We are committed to delivering measurable value by staying informed, educated and practiced on the evolving trends in copper, coaxial, fiber wiring and wireless installations and service. We hold ourselves accountable for the success of our clients and their ability to reach their goals. Our commitment to quality and integrity, in our work performance, is driven by one metric, success: *"J&L Communication succeeds when our clients succeed."* This defines who we are as a business.

Additionally, there is no question about the ever-increasing pace at which the telecommunications industry is advancing, and all of our experts are continually exposed to a rigorous training curriculum designed to ensure that they are on the leading edge of these advancements. In a nutshell, they are quite familiar with existing and emerging technologies, along with the issues that our customers will face.

Here is what we are offering:

- 1 Large professionally trained and managed W-2 Workforce
- 2 Late model uniform fleet. Our Fleet can even bare the brand of our clients where warranted
- 3 Best in class OSHA compliant safety programs
- 4 All work is QC'd internally to our customers' expectations
- 5 Decreasing employee churn through employee training and skill development programs on the newest telecommunication technologies
- 6 Accelerating the overall deployment process through initial performance testing, K.P.I. analysis and detailed performance reports
- 7 All employees adhere to a standardized professional uniform policy



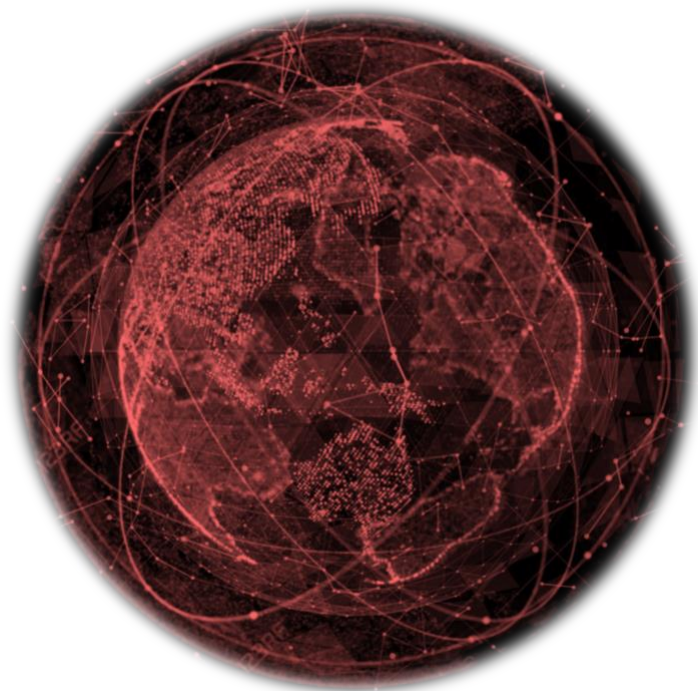


Additional Info

As JL Communications, Inc. continues to thrive, we are actively preparing for the future through the alignment of vital resources and establishing strategic partnerships.

We are proud of our recent company achievements:

- Tripled the size of our technical staff in the past 5 years.
- Improved our financial and educational capacity to support new projects and markets.
- On-boarded additional corporate management personnel in the training, safety, operations and finance departments.
- Recognized as a leading national business partner by one of our largest and oldest customers.
- Launched our fully trained and equipped fiber team in the spring of 2018 to support the increasing demand in the Fiber to the Home environment.
- Introduced an enhanced brand identity to align more with our expanding services, staff and level of expertise.
- 2019 launch of our Wireless and Structured Cabling divisions.



Contact Us

For more information about this white paper, please contact:

Dan Rickman, Director, Business Development and Contracts

P +1 (978) 454-0428

C +1 (617) 459-2228

E Daniel_Rickman@JandLcomm.com

The information contained herein is of a general nature and is not intended to address the circumstances of any individual or entity. Although we endeavor to provide accurate and timely information, there can be no guarantee that such information is accurate as of the date it is received or that it will continue to be accurate in the future. No one should act on such information without appropriate professional advice after a thorough examination of the situation.

J&L Communication, Inc.

©2019 J&L Communications, Inc. is a member of JL Group who is incorporated in the Commonwealth of Massachusetts. All Rights Reserved. Printed in the USA.

